

THE SLOW DANCE

BY LISI DEHAAS

DIRECTED BY LILY KANTER RIOPELLE

WHAT IS THE SLOW DANCE?

A mother and son are at a crossroads. She's finally ready to leave the family home. He's pushing fifty and just got engaged. When his fiancée hires a professional organizer to facilitate her future mother-in-law's move, more gets dismantled than just the furniture.


When change feels like the death of everything you've ever known, and the thing you know best is fear of change, is letting go even possible?

The Slow Dance is a thoughtful and funny look at family, identity, and the ties that can either bind or smother. A reminder that while life's big changes can throw us off our rhythm we can learn the steps to a new dance at any age.



RUMBA!

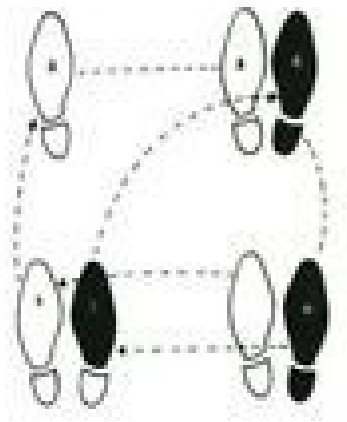
RHYTHM



Basic Step—

1. Sd with L.F.
2. Close R.F. to L.F.
3. Fwd with L.F.
4. Sd with R.F.
5. Close L.F. to R.F.
6. Bk with R.F.

Rhythm is Q, Q, S, Q, Q, S.





INSPIRATION

LSP-2152 **LIVING STEREO** MIRACLE SURFACE


RCA VICTOR

MAMBO
RUMBA
SAMBA
TANGO
MERENGUE

Arthur Murray's
Music
for
Dancing



Arthur Murray's
Dancing
Lesson
THE SAMBA

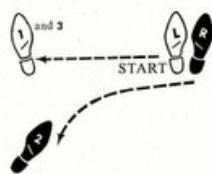


THE BALANCETES The Balancetes are balancing steps especially useful on a crowded floor.

MAN'S PART

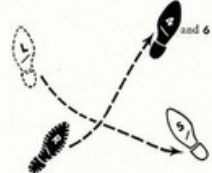
BALANCETE TO THE LEFT

1. Left foot to left side.
2. Right behind left.
3. Step in place on left.



BALANCETE TO THE RIGHT (dotted prints show feet, end of Balancete to the Left)

4. Right foot to right.
5. Left behind right.
6. Right foot in place.




THE TEAM

PLAYWRIGHT



Lisi DeHaas (she/her) is a playwright based in New York City. Her plays celebrate families in all their myriad forms. Lisi spent her 20s in San Francisco creating multi-disciplinary performance work that explored queer identity and liberation. She holds a BA in Theater and Dance from Amherst College, is a graduate of Anna Halprin's training in Life/Art process at the Tamalpa Institute and studied television writing at the Warner Bros Writers Workshop. Her play LEAVE ME GREEN, directed by Jay Stull, premiered at The Gym at Judson. She is currently writing two new plays, DELIGHT'S CHILDREN, and TELL ME SOMETHING GOOD.

DIRECTOR



Lily Kanter Riopelle is a Brooklyn-based director of new plays, musicals, and reimagined classics. She is an alumna of Clubbed Thumb's and Manhattan Theatre Club's Directing Fellowships and the Williamstown Theatre Festival's Directing Corps, a member of the Lincoln Center Theater Directors Lab, and a New Georges Affiliated Artist. She has associate or assistant directed on Broadway, and at the Oregon Shakespeare Festival, the Williamstown Theatre Festival, and others. She is an associate member of SDC. Lily is a founding co-artistic director of Two Headed Rep, a company that commissions new plays written in response to classics and produces the old and new works in rep. She studied Theatre and Computer Science at Williams College and attended the National Theatre Institute's Directing Program.

CO-PRODUCER



Kerrigan Quenemoen (she/her) is a producer, actor, and multi-hyphenate from Houston, TX. Her NYC producing credits include: *MACBETH* and *A MIDSUMMER NIGHT'S DREAM* (Double Feature), *BITCHIN' HEALS* (Experimental Bitch), *MEAT* (The Tank), *POLYLOGUES* (Tour), *TANYA'S LIT CLIT* (Experimental Bitch), *DON'T DO THIS TO US!* (The Tank) and *THE SLOW DANCE* (Upcoming at 59E59). She currently works at The Metropolitan Museum of Art as the Producing Associate in their LiveArts department. She previously worked at Williamstown Theatre Festival as their Grant Writer and Producing Assistant. Before that, she completed her *BOLD* Artistic Fellowship at Northern Stage. She graduated from Dartmouth College in 2020.

CO-PRODUCER



Sophie Kinne (she/her) is a producer, comedian, clown, and trumpet player from Syracuse, NY. She recently worked as the Production Manager for a graphic novel and animated short called, *The Cargo Rebellion: Those Who Chose Freedom*, and as a Producer for *The Haunting of the House of Those Who Never Made It* at the Brooklyn Comedy Collective. She has produced all over the world from NYC to the Republic of the Marshall Islands. She started 2023 at L'École Philippe Gaulier in Étampes, France, and finished the year working on a farm in New London, NH. She enjoys working with plants, people, and earth. She currently works at the Museum of Modern Art in Development. She graduated from Dartmouth College in 2020.

SCENIC



YI-HSUAN MA (Ant Ma) is an international scenic and production designer, now based in New York and DC. Ant's approach to design is interdisciplinary and poetic. Her theatrical installation work *Samuel* at The Tank has been nominated as a Notable Effects Show in the Hewes Design Awards. Off-Broadway selected credits: *Smart* at Ensemble Theater; *The Great Divide* at HERE ART; *Robin and Me* at Theater Row; *Bloom Bloom Pow* at ART/NY. Outside of NYC: *You're a Good Man, Charlie Brown* at Weston Theater(VT), *Much Ado About Nothing* at Opera Arts House(ME), and *As You Like It* at Catskill Mountain(NY). Associate/Assistant credit: *The Sign* in Sidney Brustein's Window at James Earl Jones Theatre; *The Ally* at Public Theater; *The Best We Could* at MTC; *Wolf Play* at MCC Theater. Check her works: ant-setdesign.com

COSTUMES



Phuong Nguyen is a New York based Vietnamese costume designer with a background in East Asian studies and Vietnamese history. Their work dissects different aspects of her and other marginalized groups' heritage and identities, and tells stories absent from the "victors" history books. They believe in the importance of being kind and respectful while enjoying the privilege of telling human stories. They are also working on letting go of the pressure to be perfect in order to enjoy work and life more. They are a member of the USA 829 Union.

LIGHTING



Paige Seber (she/her): recent credits include *Titanique* (Off-Broadway, 2023 Lortel award for outstanding musical), *Heroes of the Fourth Turning* and *Wolf Play* (Rec Room Arts), *Is Anyone Alive Out There?* (Audible Live), *Ready. Set. Play!* (Virgin Voyages), *The Consul* (San Francisco Conservatory of Music), *Powerline Road* (Theatre NOW), *Cityscape* (Good Apples Collective), *Good Friday* (The Flea), and *Swann: A Digital Opera Short* (Catapult Opera). Proud member of United Scenic Artists 829. seberlighting.com.

SOUND



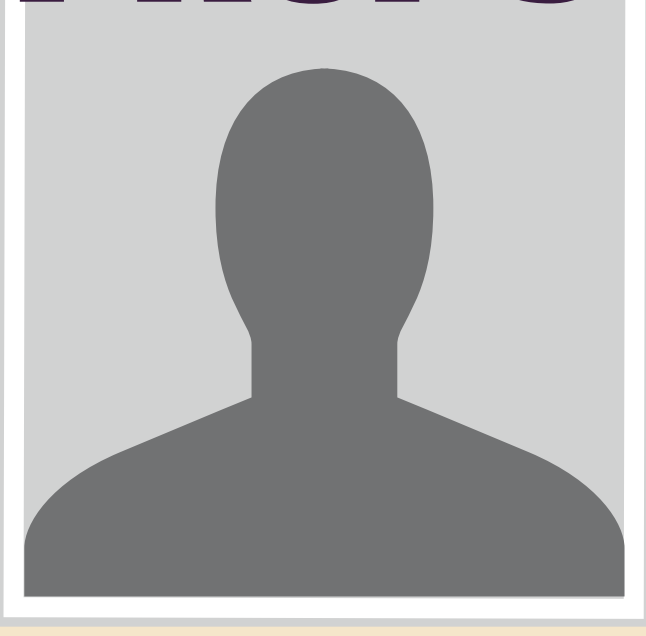
Bailey Trierweiler is a sound designer, editor, engineer and mixer for live theater performance, dance, film, podcast and audio drama. He is a multipotentialite artist - he finds joy in taking on projects which demand different skill sets. Kind collaboration and communication are key elements of his process, and he returns to hobbies like cooking and listening to music for inspiration and new ways of thinking about his sound work.

CASTING



Claire Yenson: NEW YORK: Off-Broadway: *Jane Anger* | The Playwrights Realm, New York Theatre Workshop, The Public Theater. INTERNATIONAL: London: Donmar Warehouse: *Sweat*. FILM: *Sharper* (A24/Apple). TV: *Fleishman is in Trouble* (FX/Hulu), *Modern Love* (Amazon), *Bridge and Tunnel* (Epix). OTHER: Bergdorf Goodman Spring '22 Campaign. PERSONAL: she/her | Claire is the Resident Casting Director at The Playwrights Realm and she is a proud native of the D.C. Metro area. | Training: Virginia Commonwealth University.

PROPS



Paul Birtwistle: Props Supervisor: *Heart Strings* (Atlantic for Kids). Selected Props Artisan: *Days of Wine and Roses* (Atlantic), *The Far Country* (Atlantic), *Downstate* (Playwrights), *american (tele)visions* (NYTW), *Corsicana* (Playwrights), *Epiphany* (LCT), *The Bedwetter* (Atlantic). BA: Bennington College.

TECHNICAL DIRECTOR



Steven Brenman practices Scenic Carpentry, Painting and Technical Direction in and around New York City. They studied Theatre at Trinity College (CT) and Design at Parsons (NY). In addition to their work at the Stella Adler Studio of Acting Steven is the Resident Designer for Letter of Marque Theater where they have designed *Gifts*, *Bully Me Down* and *Fortune's Take*. Other recent work includes Technical Direction of *When January Feels Like Summer*, *Year of the Rooster*, *Fast Company*, and *Marathon of One-Act Plays* (Ensemble Studio Theater); *Visitations* and *Paul's Case* (Prototype Festival); *Alice*, *Grace*, *Anon* (New Georges); *A Raisin in The Sun* (Gallery Players).

PRODUCTION MANAGER



Allie Posner (she/her) is the full time production manager at the historic HB Studio. She has held positions in Stage Management, Wardrobe Management, Lighting Electrician, and Production Management. Recent Theatrical credits include; *MOJIN* [MORNING//MOURNING], *Lizard Boy*, *In Corpo*, *Psychic Self-Defense*, and *Arms and the Man*.

STAGE MANAGER



Erica Zippel Schnitzer (she/her) is a Brooklyn-based director, lighting designer, and theatrical manager. Favorite projects include *Particular Matter(s)* by Tomas Saraceno, *Fandango for Butterflies* and *Coyotes* by Andrea Thome, *Plastic Bag Store* by Robin Frohardt (PomArts & Times Square Arts Alliance), *What The Constitution Means to Me* by Heidi Schreck (NYTW), *Black Light* by Daniel Alexander Jones (Greenwich House Theater), and *Mile Long Opera* (The Office Arts). She's worked in a variety of roles with a variety of theater / production companies including New York Theatre Workshop, The Shed, The Bushwick Starr, HERE Arts Center, Pomegranate Arts, and En Garde Arts.

JASMINN JOHNSON



Jasminn Johnson (Fiancee): Broadway: Ain't No Mo. Off Broadway: King Lear (New York Classical Theater), Blues for An Alabama Sky (Keen Company). Regional: Blues for an Alabama Sky (Barrington Stage); Twelfth Night (Shakespeare on The Sound).
TV/Film: "The Equalizer" (CBS) "The Politician" (Netflix). She is a proud graduate of The Juilliard School's Drama Division where she also currently teaches and directs. Endless gratitude to her family, friends, students, and teachers.

PEGGY J. SCOTT



Peggy J. Scott (Mother) works in film, television and theatre, across genres, in roles that are often transformational. Her first professional job as an actor was at La Mama in New York City. She went on to work extensively in regional theatre, ultimately returning to New York where she has continued to work on and Off Broadway, and in recurring roles and guest appearances on award-winning television shows and in film. Her latest project is MR HARRIGAN'S PHONE (2022 for Netflix) based on the Stephen King novella, starring Donald Sutherland and directed by John Lee Hancock.

BLAIR BAKER



Blair Baker (Sal/Others) is a New York and Los Angeles-based actor, director, and writer who has worked extensively in New York, California, and regionally. They are the co-artistic director of Missing Bolts Productions and are currently a member of the cast of The Play That Goes Wrong at New World Stages. As a director, they are in pre-production for a TV Pilot called The Exes and am in post production for two short films. They are also developing the full-length play Anna: A Ghost Story with co-artistic director of Missing Bolts Zac Kline.

LUCY YORK



Lucy York (*The Bear*) grew up in Baltimore and lives in Brooklyn. She graduated from Baltimore School for the Arts, where she studied classical clown, Laban movement study, and Linklater and Lessac vocal technique. She also graduated from Skidmore College with a degree in economics and a minor in dance. She is happiest when engaged in a challenge small or large, she has accepted that her nature is generally to try too hard. An independent person who loves being part of a team, she secretly thrives on long days, and the giddy punchiness that follows too many hours of focus.

CARY DONALDSON



Cary Donaldson (*Son*): Broadway: *Mrs. Warren's Profession*; Off-Broadway: *Straight White Men, Hamlet, The Rivals, The Old Boy, The Merchant of Venice*. Other credits include *Pass Over* at the Studio Theatre in DC and *Time Flies and Other Comedies* at Barrington Stage Company. He has appeared in *Elementary, The Men Who Built America, and Blue Bloods*.

59E59



***The Slow Dance* will be a part of 59E59's
2023-2024 Season**

59E59 Theaters was established by the Elysabeth Kleinhans Theatrical Foundation in 2004 to grant professional space and expertise to non-profit theater companies premiering their work in New York City. Under the leadership of Val Day, Artistic Director, and Brian Beirne, Managing Director, 59E59 Theaters presents a year-round curated program of Off Broadway plays and musicals that are nurtured and supported through highly-subsidized rental rates, as well as production, ticketing, FOH, marketing, and press support.

The Slow Dance will run in Theatre C at 59E59 from March 8-23.

www.59e59.org



WHAT WE NEED

We are halfway to our fundraising goal! We need your support to help us cross the finish line.

70% of all donations go directly toward paying artists for their time and talent (with the other 30% going toward production and administrative costs)

WHAT YOUR MONEY IS GOING TOWARD

➤ \$100 will support 8 hours of rehearsal space at a studio in NYC

➤ \$1,000 will cover the costs of all the props for our actors

➤ \$2,500 will support one outstanding designer throughout this process

➤ \$4,000 will support one of our incredibly talented actors through several weeks of rehearsal

APT. 10C PRODUCTIONS
PRESENTS

THE SLOW DANCE



BY LISI DEHAAS
DIRECTED BY LILY KANTER RIOPELLE

MARCH 8 — 23

CONTINUE THE CONVERSATION

email: kerriganq@gmail.com
stkinne20@gmail.com